

2021 KIDS COUNT IN MICHIGAN

Data Book



Overview of 2021 Kids Count in Michigan Data Book Findings and Kent County Data

Presented by Kelsey Perdue,
Kids Count in Michigan Director



2021 Kids Count in MI Data Book

- Mostly state data
- Over 50 indicators
- New sections!
- Quotes from youth and young adults
- Most recent year data
 - Pre-COVID
 - Impact of COVID

Introduction.....	1
About Kids Count.....	2
Using the Data Book and profiles.....	2
How stakeholders use the Data Book.....	3
A note to lawmakers.....	5
Tips to influence state priorities.....	6
Michigan budget cycle.....	7
Data in action: Key findings and recommendations.....	8
Overall well-being in Michigan.....	12
Population and demographic overview....	14
Family and community.....	16
Economic security.....	20
Education.....	25
Health and safety.....	32
Data definitions and notes.....	36
Endnotes.....	46

Economic Security

MI 15th in income inequality

Top 10 unequal Michigan metropolitan areas

Metropolitan area	Ratio of top 1% income to bottom 99% income
Grand Rapids-Wyoming	25.9
Kalamazoo-Portage	24.7
Traverse City	22.6
Detroit-Warren-Dearborn	22.0
Niles-Benton Harbor	21.8
Midland	21.2
Ann Arbor	21.0
Alma	19.7
Lansing-East Lansing	18.3
Holland	18.0

Source: Economic Policy Institute, 2015

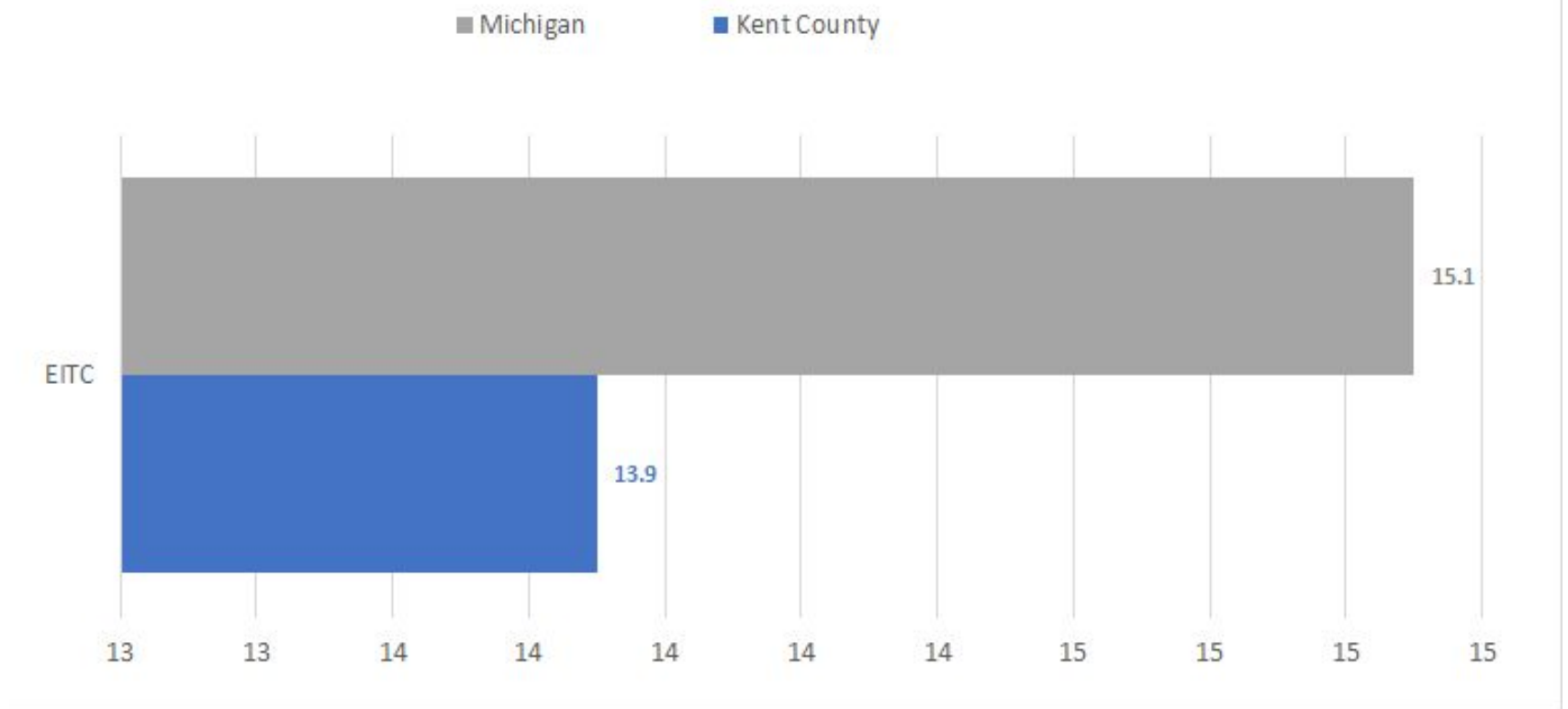
What does this mean?

For example, in the Grand Rapids-Wyoming metro area, the top 1% of earners make **25.9 times more** than the bottom 99% of earners.

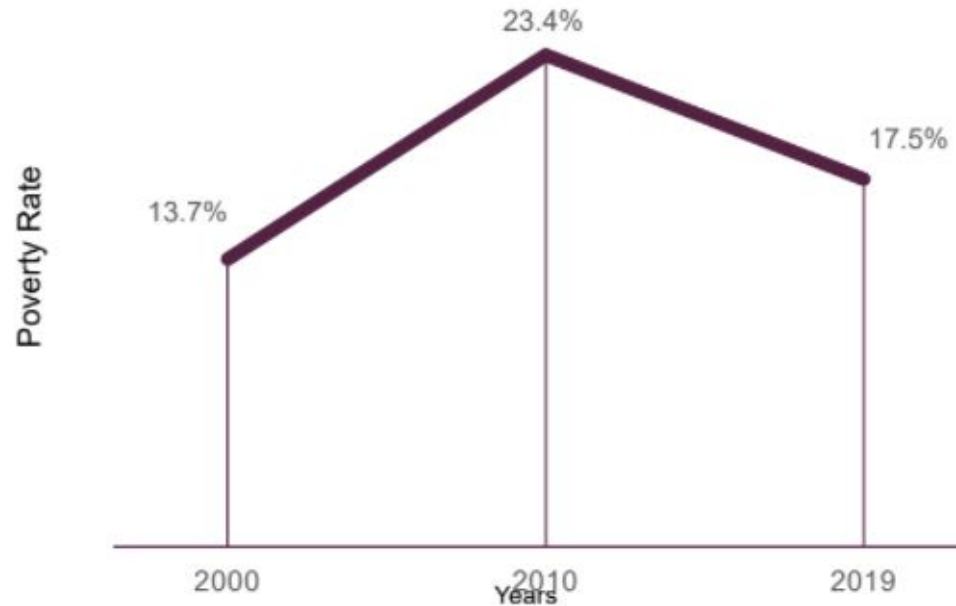
In this area, the average income of the top 1% is **\$1,219,262**. The average income of the bottom 99% is **\$47,150**.

Earned Income Tax Credit

13.9% of households in Kent County received Earned Income Tax Credit (EITC)



Childhood poverty rate up from 2000, down from 2010



Source: Michigan League for Public Policy

What is the Federal Poverty Level (FPL) for a family of four in Michigan?

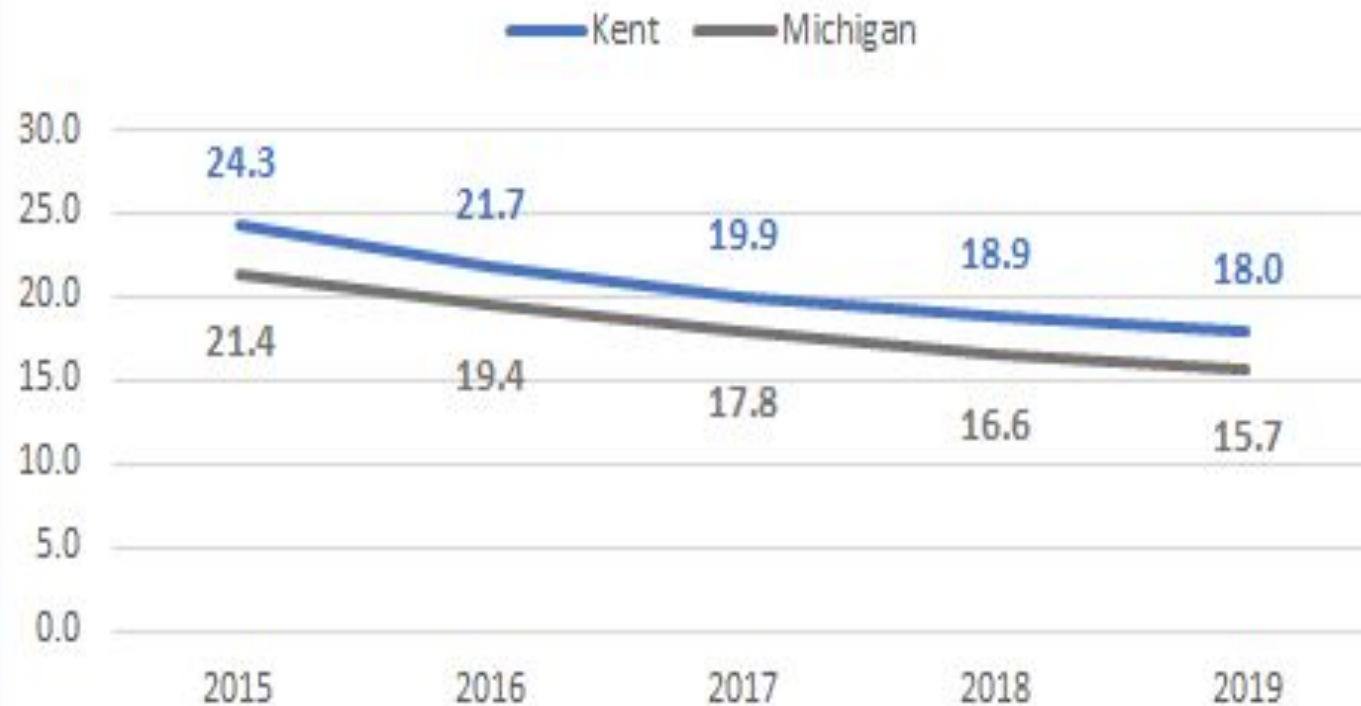


75% of Michigan kids live in two-adult households.

Source: U.S. Department of Health & Human Service, 2019

Continued decline in teen births

Births to teens are declining. At a rate of 18 per 1,000 births, Kent county has a higher teen birth rate than the Michigan average.



**A million and
a half
Michigan
households
can't afford
the basics**

Most jobs don't pay enough

- 58% of Michigan jobs pay less than \$20/hour

The cost of household necessities increased in last decade at an average annual rate of 3.4%

- the official national inflation rate was just 1.8%

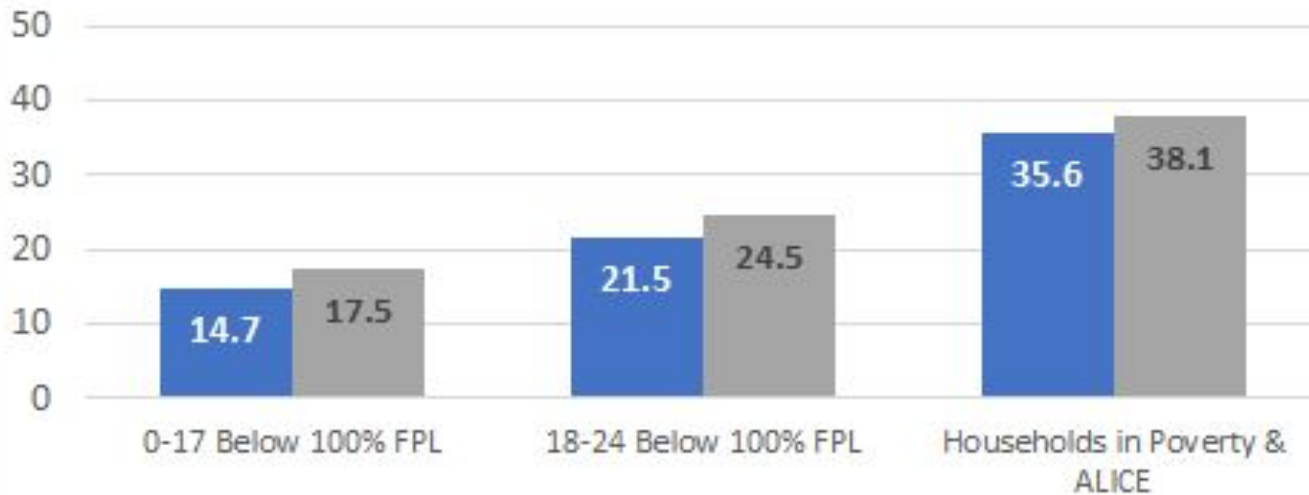
To make ends meet, a family of four is estimated to need to earn \$32.06/hour

38% MI households in poverty and ALICE

Poverty only tells part of the story

In Kent county, 14.7% of children 0-17 live at or below the federal poverty level, as do 21.5% of young adults 18-24. In total, over 35% of households live in poverty and ALICE (asset limited, income constrained, employed).

■ Kent County ■ Michigan

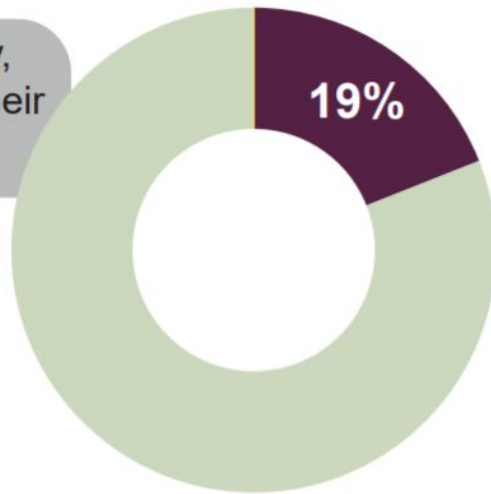


**Kent County Median
Household Income:
\$66,500**

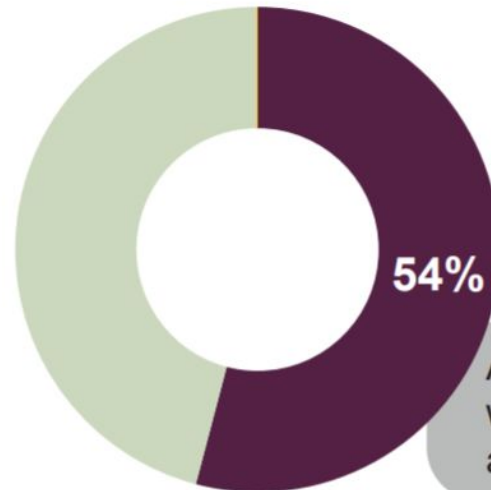
**Michigan Median
Household Income:
\$59,522**

Infant care in licenced centers unaffordable for many

But for a median family,
infant care is 19% of their
income



Source: Economic Policy Institute, accessed January 2021



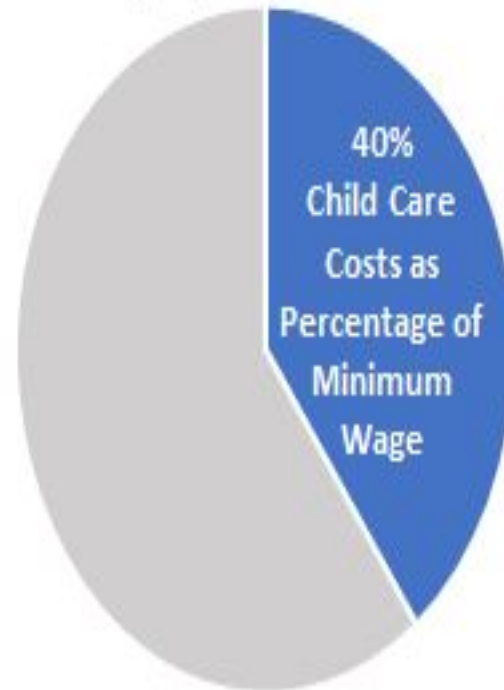
And for a minimum wage
worker, infant care costs
are 54% of their income

Childcare options remain costly

**Kent County Average
Cost of Full Time
Childcare per Month
\$663**

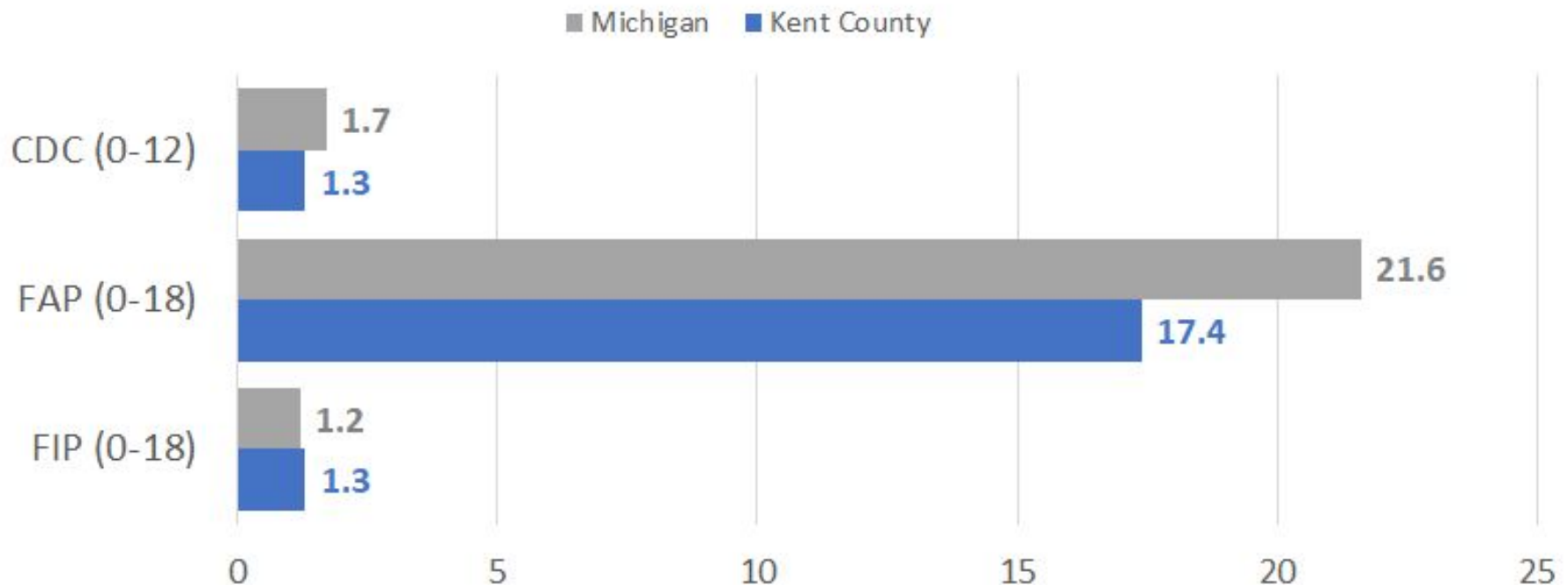
**Michigan Average Cost
of Full Time Childcare
per Month
\$632**

A full time minimum wage worker in Kent county would need to spend 40% of their monthly income to pay for child care

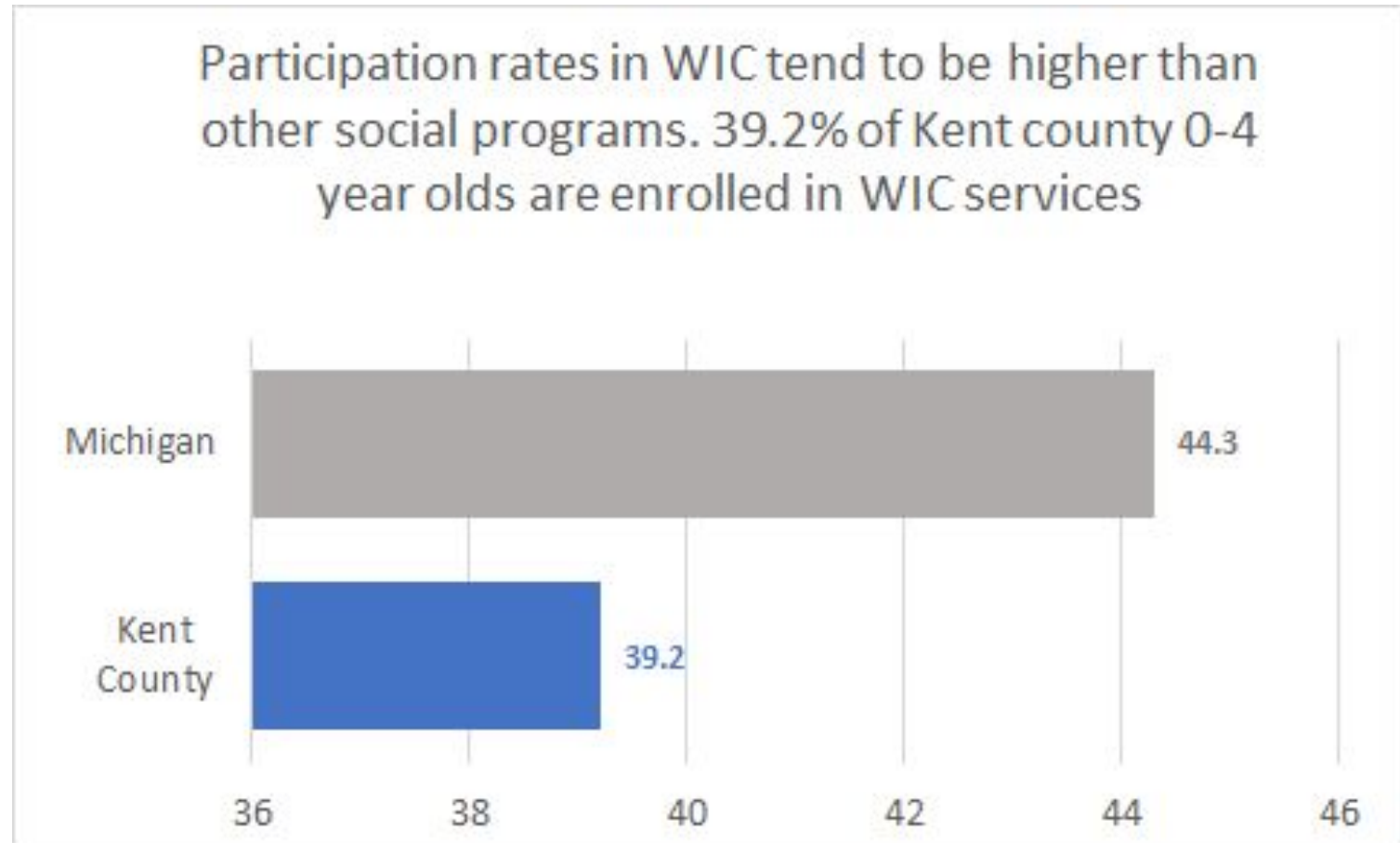


Subsidy participation doesn't match need based on FPLs

Only 1.3% of 0-12 year olds in Kent county are approved to receive CDC subsidies, and just 1.3% of children 0-18 are eligible to participate in the Family Independence Program (cash assistance). 17.4% of children are eligible for Food Assistance (FAP).

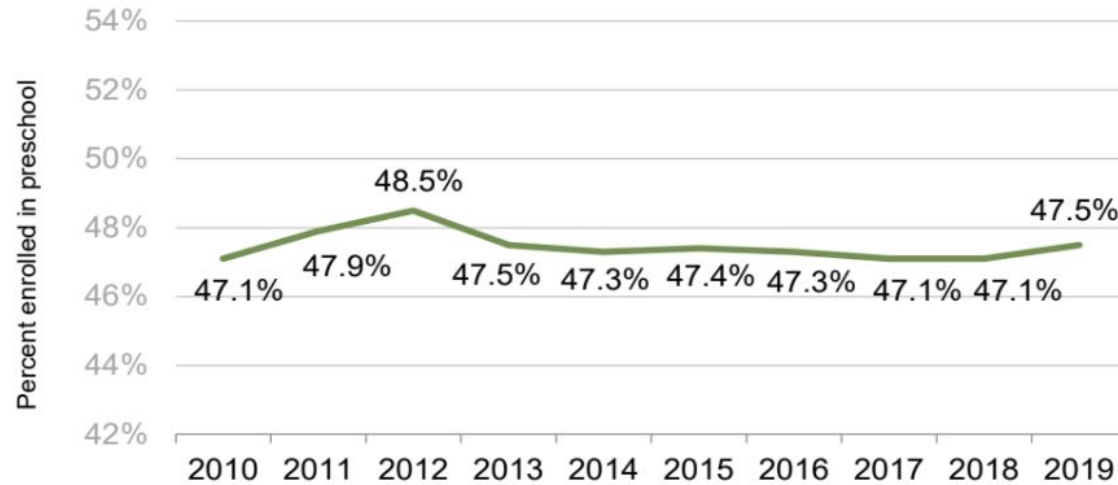


WIC enrollment below MI average



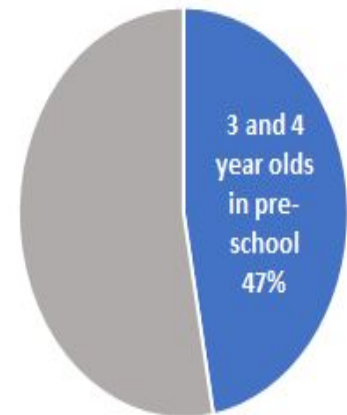
Less than half of 3- and 4-year olds are in preschool

3- and 4-year olds enrolled in preschool virtually flat in last decade



Source: American Community Survey 5-Year Estimates

47% of 3 and 4 year olds in Kent county are enrolled in preschool programs



Source: American Community Survey Table B14003

Education

Higher needs districts get fewer resources

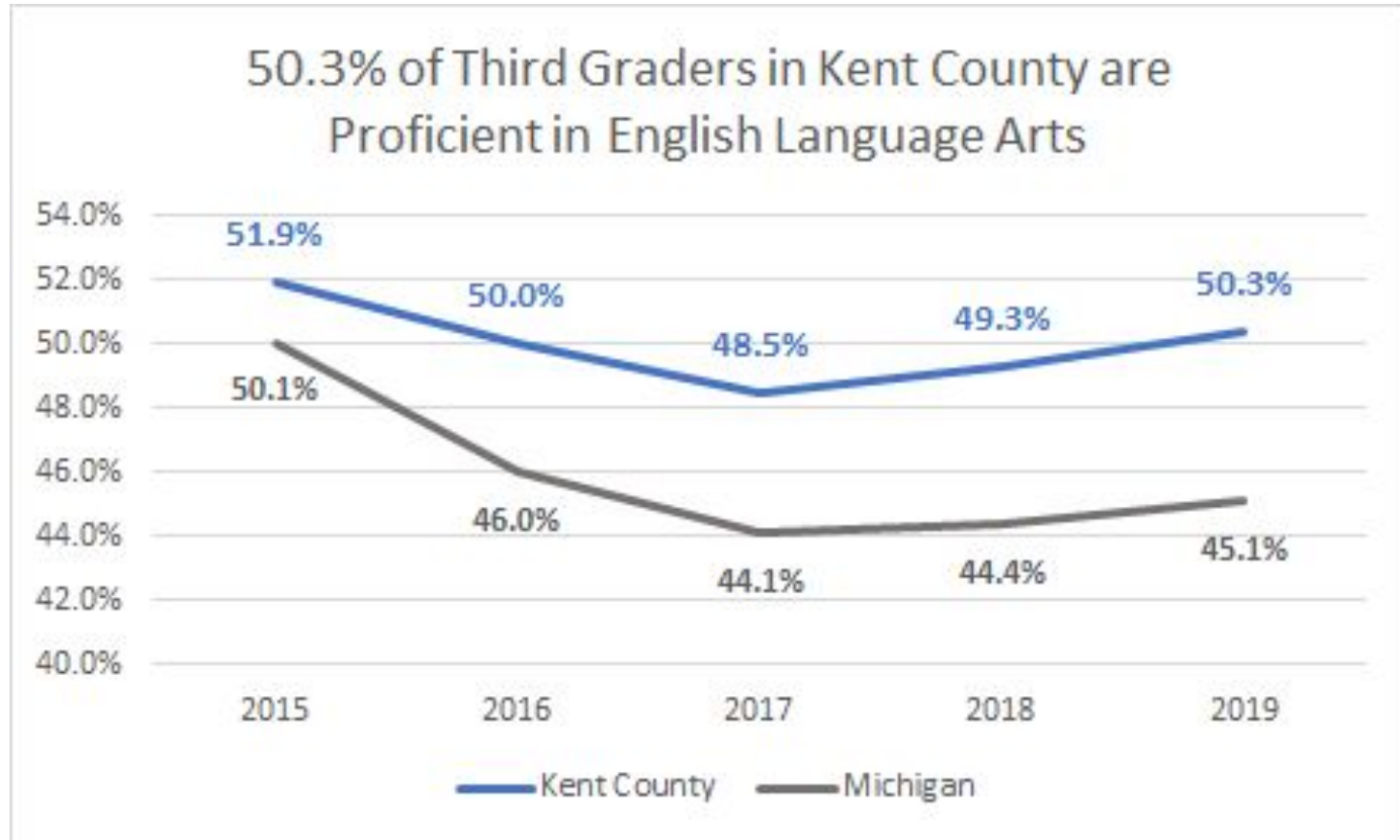
Michigan provides less funding to its highest-poverty districts than to its lowest-poverty districts.

Michigan shifted a total of \$4.5 billion intended for K-12 public schools to universities and community colleges to help balance the state budget from 2010-2019

Students in low-poverty schools two times more likely to have an experienced teacher; three times more likely to have a teacher working in-field

Teacher quality measure	Low-poverty schools	High-poverty schools
Inexperienced teachers	11.4%	24.5%
Out-of-field	3.6%	10.9%

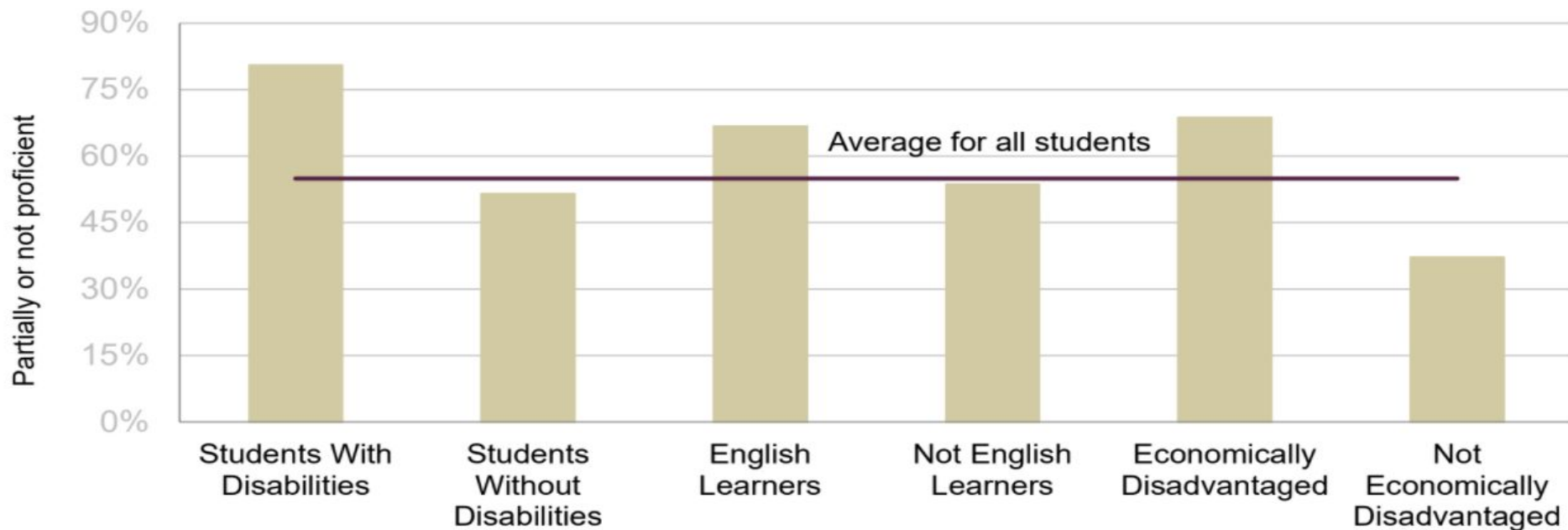
ELA proficiency above MI average



Academic testing & 3rd grade reading

Academic testing was canceled for the 2019-2020 school year, but was not waived for the 2020-2021 school year.

Student 3rd grade reading levels tied to ability, language and socioeconomic status



10%

of Michigan households lacked home internet access in 2019.



Nationally, homes with school-aged children not equally equipped to support at-home learning

49%

said there was no adult available in the household to help children with schoolwork.

36%

were unable to provide kids with a quiet place to study.

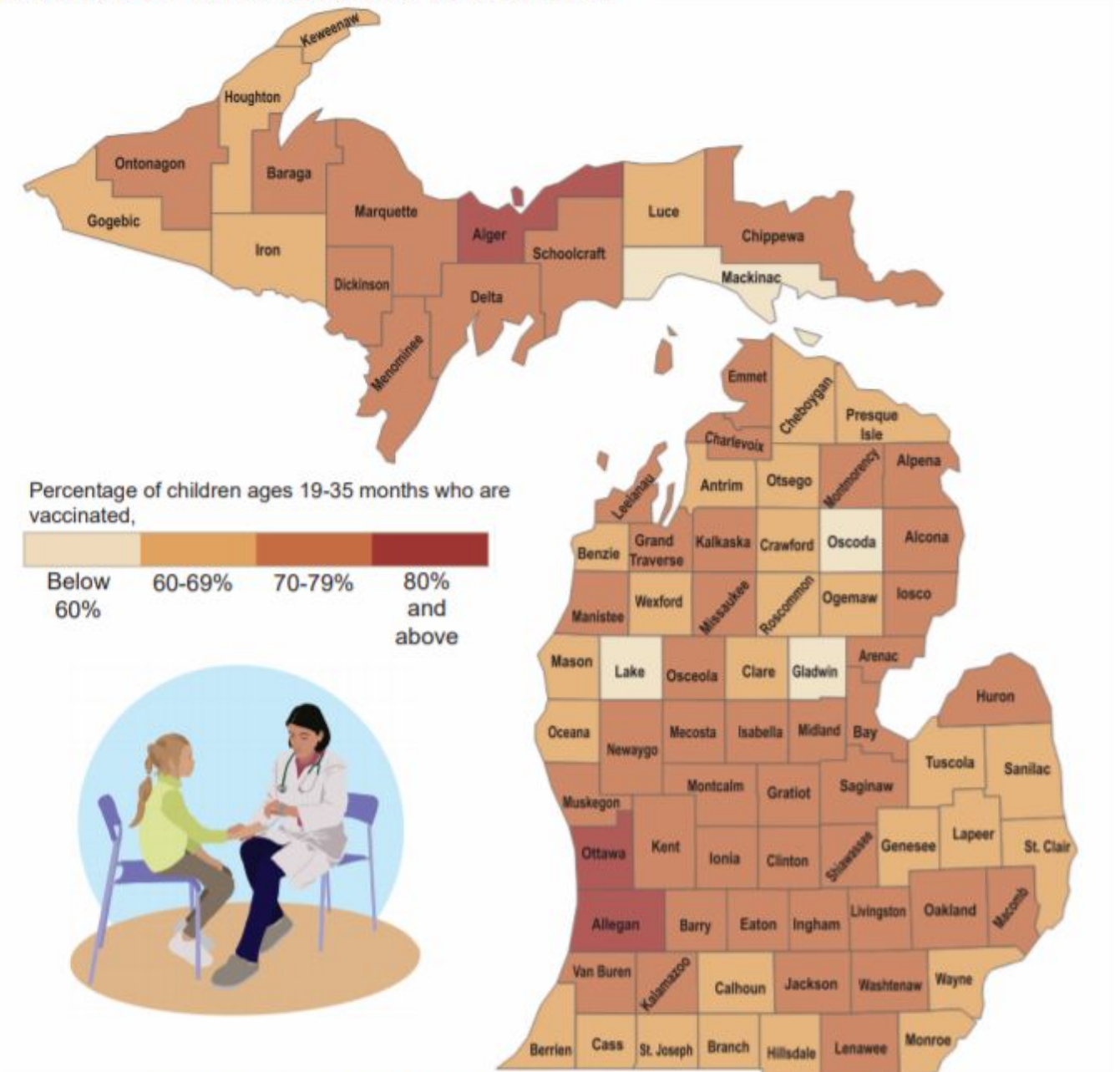
32%

lacked adequate broadband internet and online learning tools.

Source: Annie E. Casey Foundation, 2020

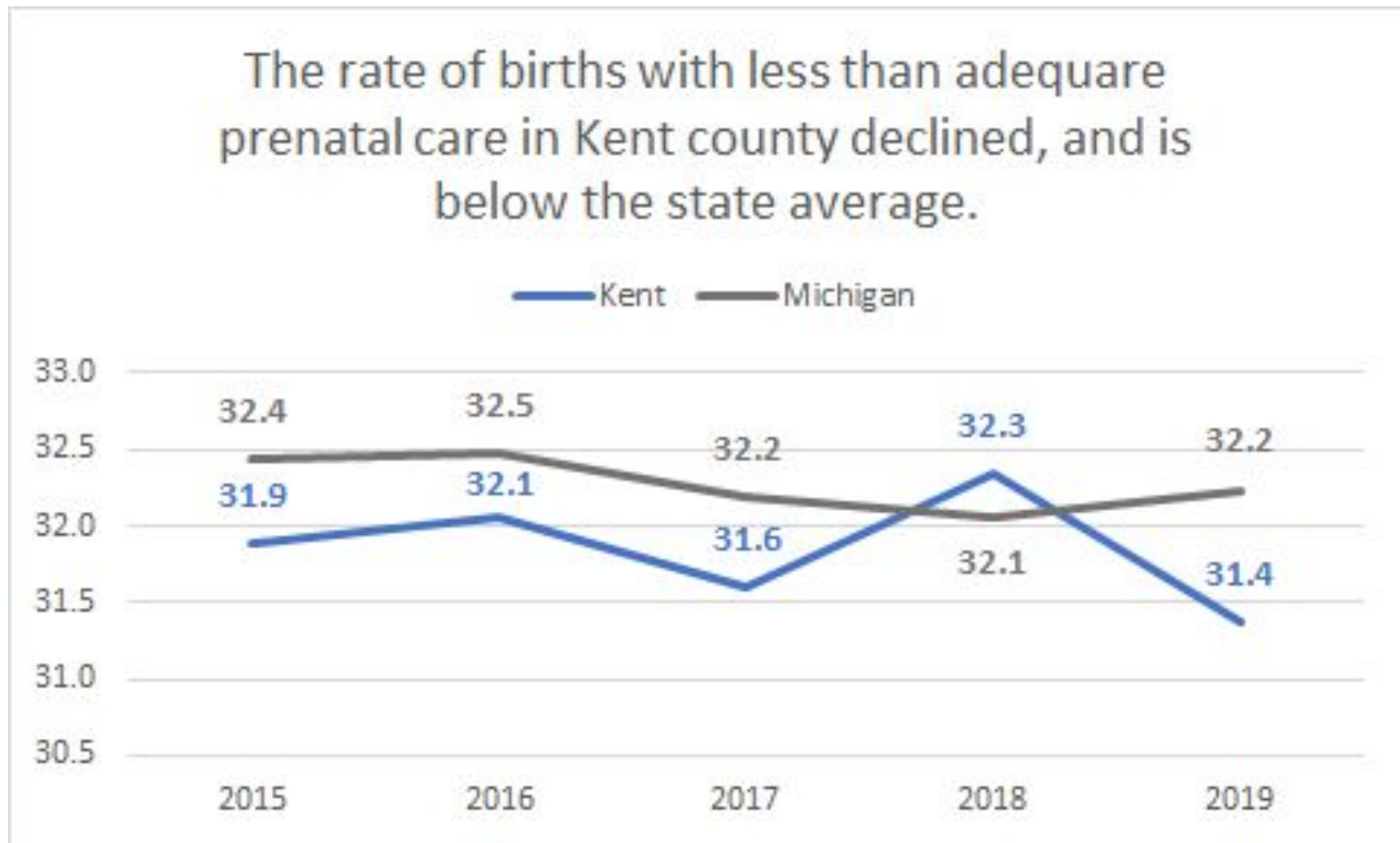
Health & Safety

Vaccination rates continue to decrease

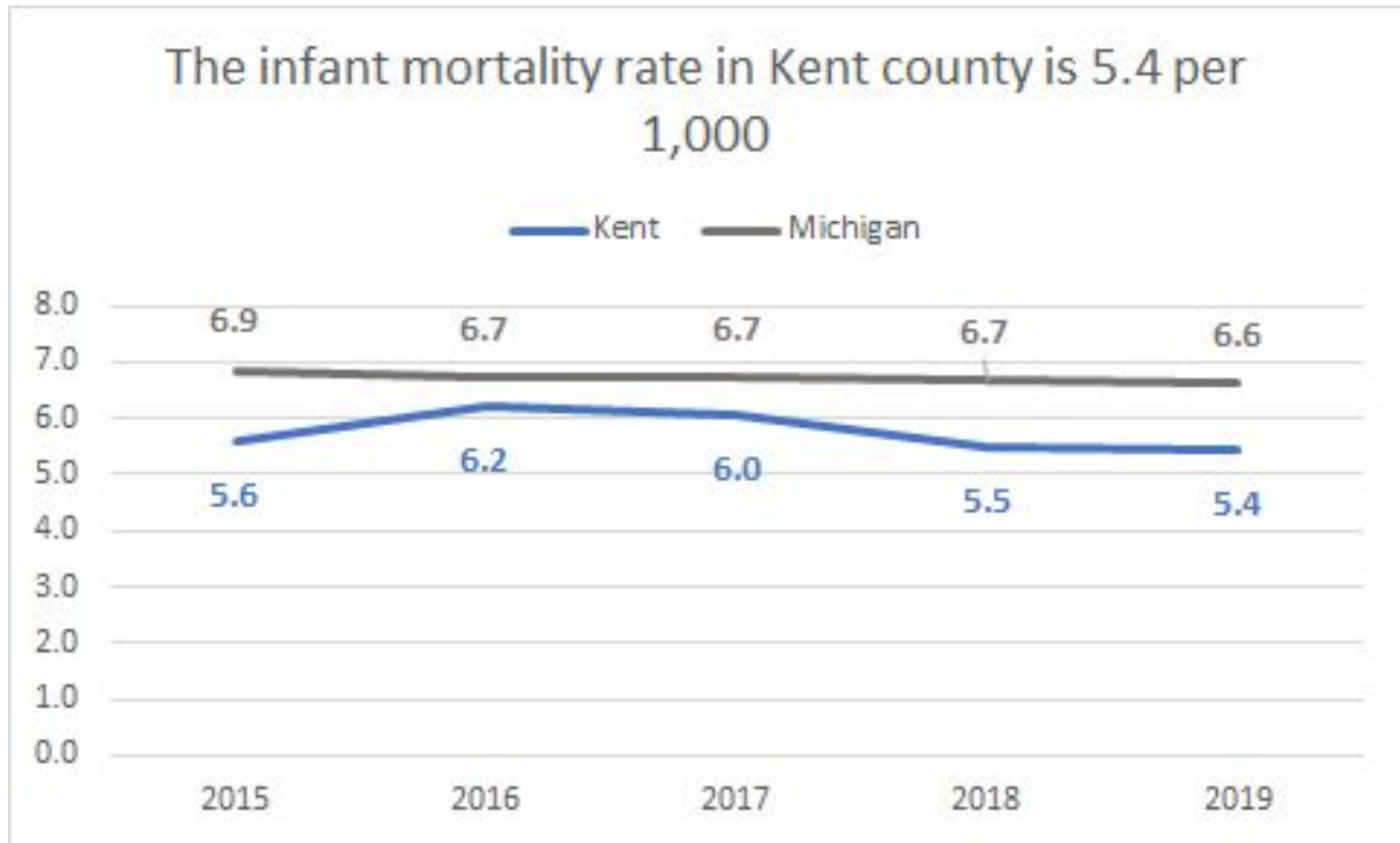


Source: Michigan Department of Health and Human Services, Division of Immunization, Michigan Care Improvement Registry, 2020

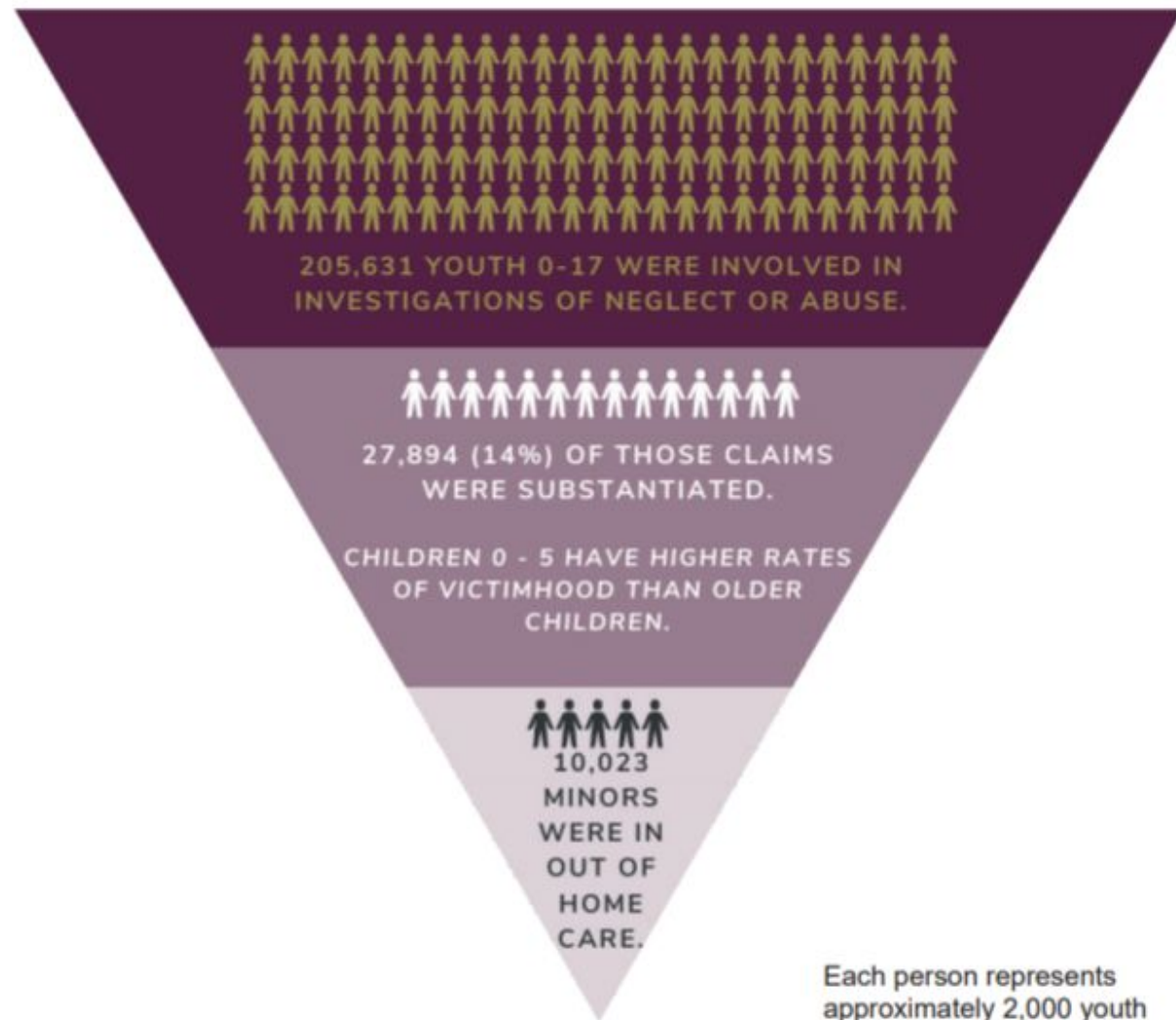
Nearly one in three births receive less than adequate care



Infant mortality below state average



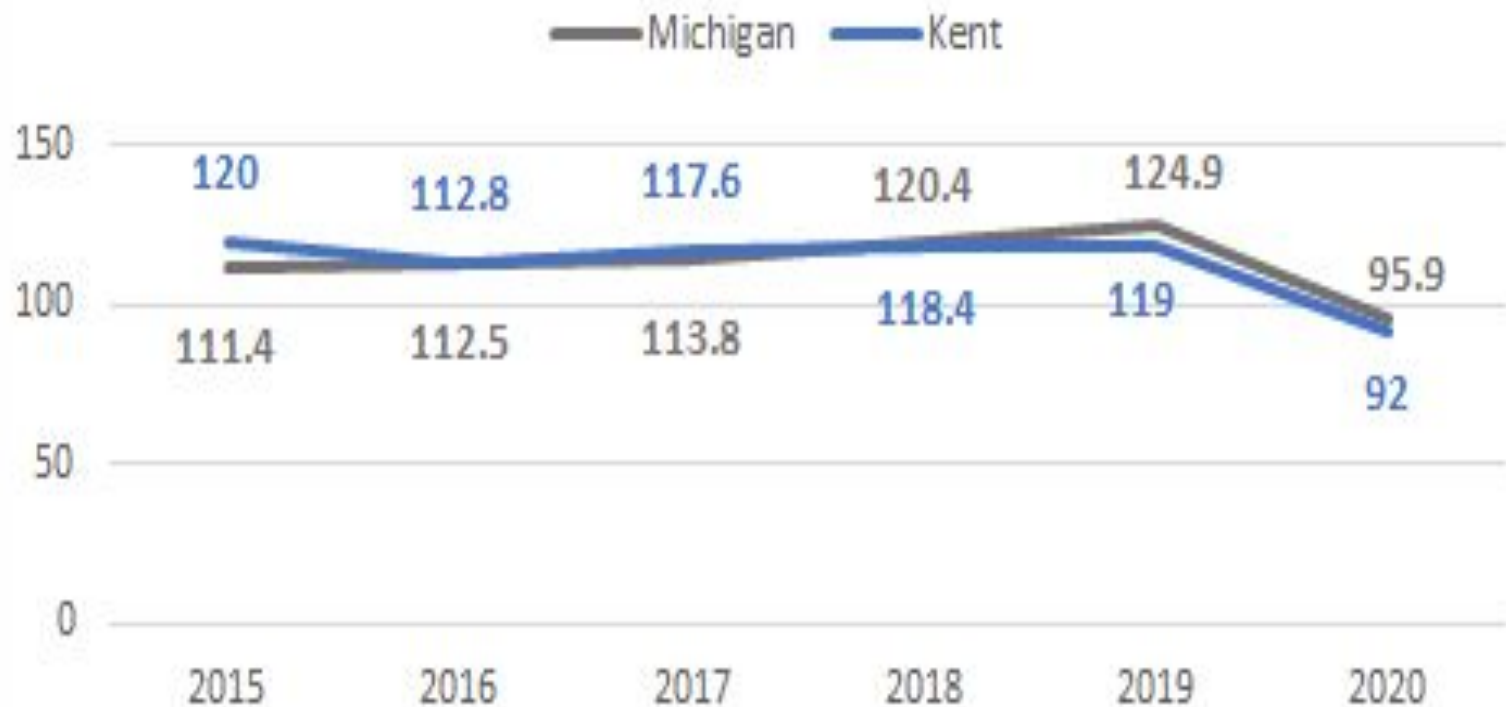
An overview of abuse and neglect investigations



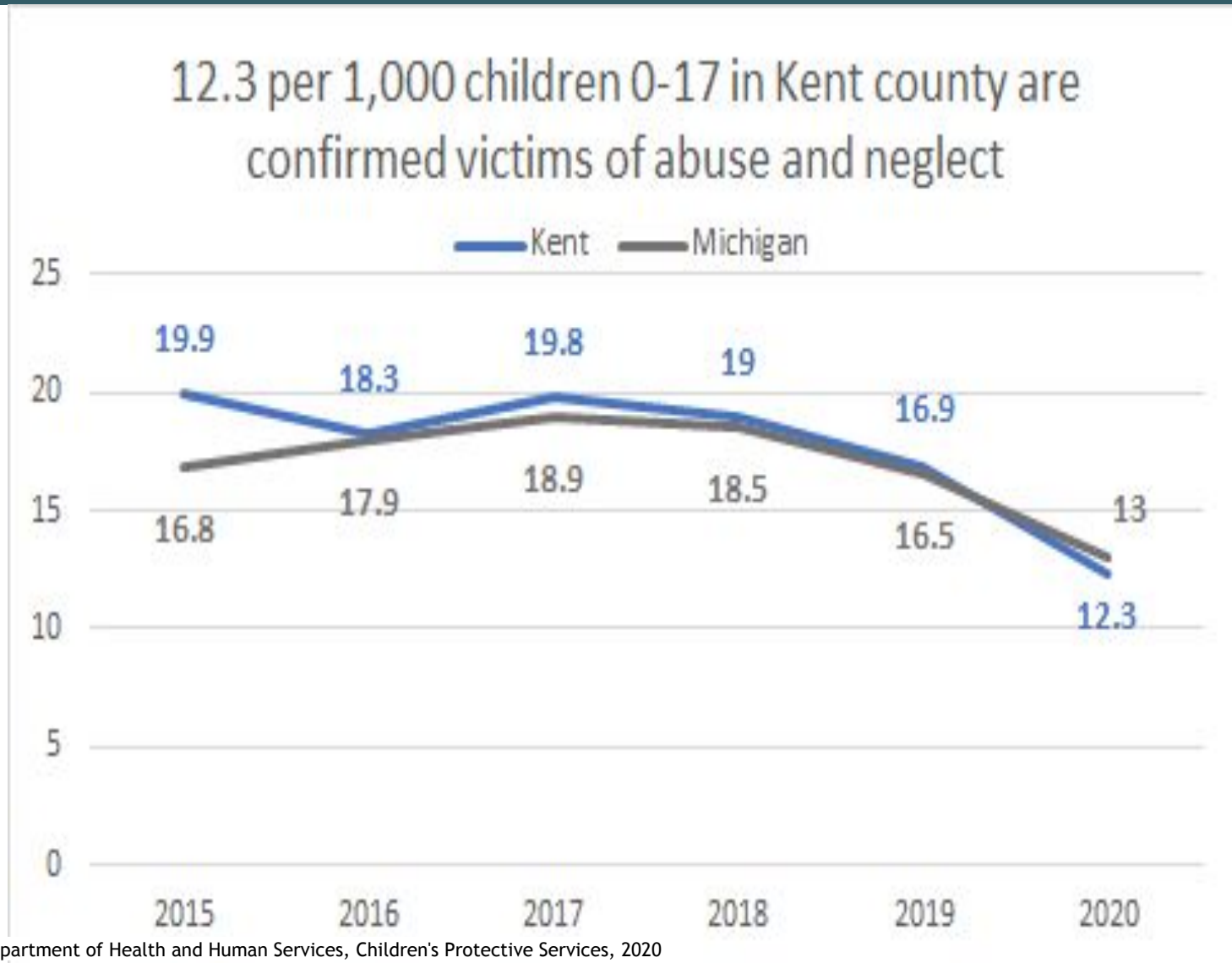
Source: "Michigan Department of Health and Human Services, Children's Protective Services, 2020

CAN investigations declined in 2020

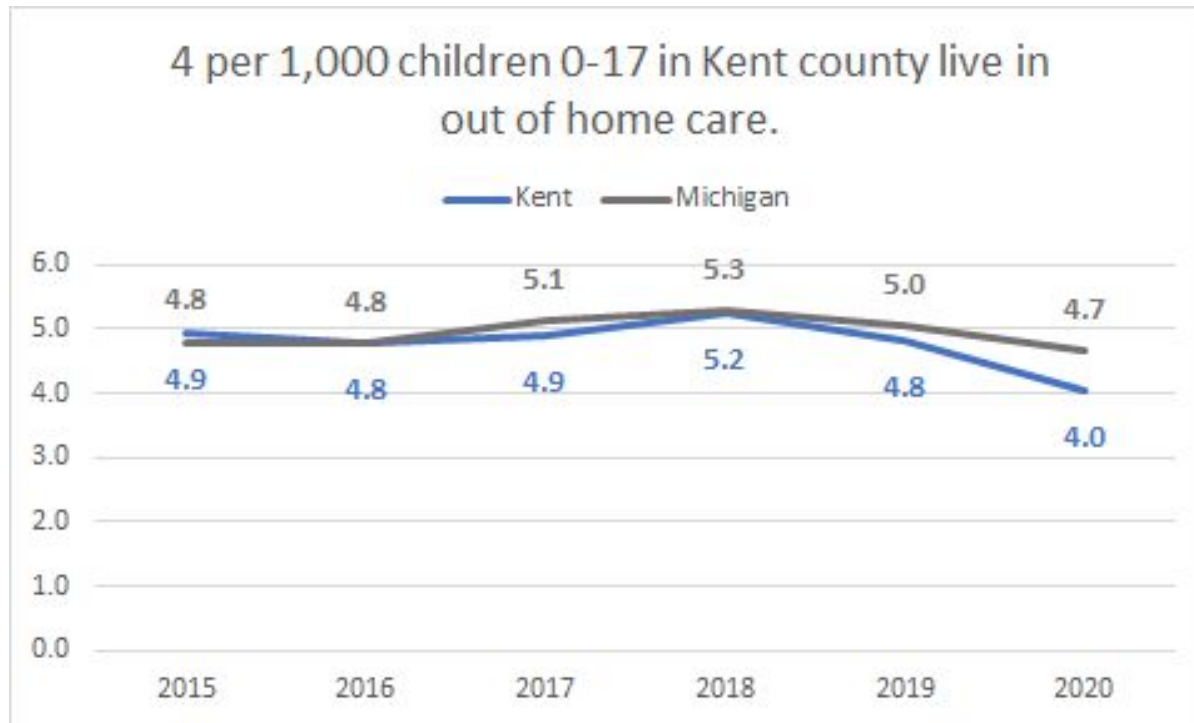
Children 0-17 in Kent County live in households investigated for abuse and neglect at a rate of 95.9 per 1,000.



Confirmed victim rate also declined



Kent County out-of-home care below state average



Many more findings, policy recommendations and recent policy wins in Data Book

Data in Action

Strategies for improving overall child well-being

One of the best ways to help children reach their potential is to invest in their families and the communities that they are growing up in. These policy recommendations are informed by data and identified as winning strategies for improving well-being in the areas of family and community, economic security, education, and health and safety.

Family and Community

Provide comprehensive health education

The number of births to teens aged 15-19 are less than half of what they were a decade ago. While Michigan does not have a standard sexual education curriculum or require it to be taught in schools, the teens in our focus groups emphasized the importance of a curriculum that is inclusive of all gender identities and sexual orientations.

RECOMMENDATION: A comprehensive health education can have positive impacts on long-term health outcomes. All youth should have access to a comprehensive and inclusive sexual health education.

Address the digital divide

Both rural and urban communities alike have low rates of access to high-speed internet, and at least 10% of all Michigan households didn't have home internet access in 2019. Lower-income earners are even less likely to have high-speed internet and are more reliant on using smartphones to access the internet for tasks that are designed for larger screens, like homework.

WIN & RECOMMENDATION: Gov. Gretchen Whitmer announced an initiative to increase high-speed internet in fall 2020, and federal COVID recovery plans include new investments for state broadband infrastructure. All efforts to expand connectivity should include a focus on affordability, encourage community-owned options and include investments in existing resources like public libraries.

Invest in child neglect and abuse prevention

In 2020, 205,631 minors were in families where allegations of child neglect or abuse occurred. After an investigation, 14% of those claims (27,894) were found to be substantiated. In 2020, 10,023 youth were in out-of-home care.

WIN: The federal Family First Prevention Services Act, passed in 2018, increased resources available for foster care prevention services and to keep more kids with their family while reducing funding for group placements that are clinically unnecessary.

Support youth transitioning out of foster care

Over 10,000 youth were in foster care in 2020, and several thousand exit the system every year. In Michigan, only 5% of youth transitioning out of foster care receive employment assistance, and 1% receive education support.

RECOMMENDATION: Ensure adequate support for programs that assist foster youth exiting the system with education, housing and work.

Reduc
Michigan
to suppo
pacts re

Economic

Addre
Michigan
much as
rate in to
Across th
ends me

Meet af
Nearly a c
portionate
Even mor
78,000 si
healthy fo
free from

Support
In 2019, 1
Family Inc
levels are
benefits b
receiving

STATEWIDE DATA PROFILE

POPULATION	2010	2019	% change	POPULATION BY RACE (2019)	
Total population	9,883,640	9,986,857	1.0%	Child population by race	
Child population	2,344,068	2,143,933	-8.5%	Hispanic 0-17	182,284
• Ages 0-5	720,314	683,798	-5.1%	Non-Hispanic 0-17	
• Ages 6-12	915,888	831,314	-9.2%	• African American/Black	386,454
• Ages 13-17	707,866	628,821	-11.2%	• American Indian	17,394
Young adult population				• Asian/Pacific Islander	81,168
• Ages 18-24	976,358	945,523	-3.2%	• White	1,476,633
				Young adult population by race	
				Hispanic 18-24	69,220
				Non-Hispanic 18-24	
				• African American/Black	156,345
				• American Indian	8,022
				• Asian/Pacific Islander	45,612
				• White	666,324

ECONOMIC SECURITY	KEY TRENDS OVER TIME		BASE YEAR (2010)		MOST RECENT YEAR (2019)		
			NUMBER	RATE	NUMBER	RATE	RATE CHANGE
							TREND
	Children in poverty, ages 0-17		537,003	23.4%	367,411	17.5%	-25.2%
	Young adults in poverty, ages 18-24		235,962	26.7%	217,457	24.5%	-8.3%
	Households in Poverty & ALICE		1,569,992	41.2%	1,508,284	38.1%	-7.6%
	ADDITIONAL DATA (2020 UNLESS NOTED)						
	Children receiving...		NUMBER	RATE			
	• Free and reduced price lunch, K-12		710,473	50.5%			
	• Subsidized child care, ages 0-12		25,246	1.7%			
	• Cash assistance (FIP), ages 0-18		26,657	1.2%			
	• Food assistance (FAP), ages 0-18		491,075	21.6%			
	• Women, Infants and Children (WIC), ages 0-4 (2019)		253,535	44.3%			
	• Supplemental Security Income, ages 0-18*		37,102	16.3			
	• Any amount of child support owed		397,443	83.6%			
	Median household income (2019)		\$59,522	N/A			
	Average cost of full-time child care/month		\$632	N/A			
	• Percent of full-time minimum wage		N/A	37.9%			
	Families receiving the Earned Income Tax Credit (EITC) (2019)		738,380	15.1%			
	Families with high-cost housing (2019)		1,052,604	26.7%			

KIDS COUNT provides child advocates, agencies, public officials and legislators with the best available data, nonpartisan policy recommendations and tools to advance policies that benefit children.

Our data-based profiles help decision-makers understand the educational, social, economic and physical well-being of children across the state.

Data profiles
for 83
counties, 4
regions, 2
cities with
trend & most
recent year
data

Webinar overviewing more 2021
findings available [online](#)